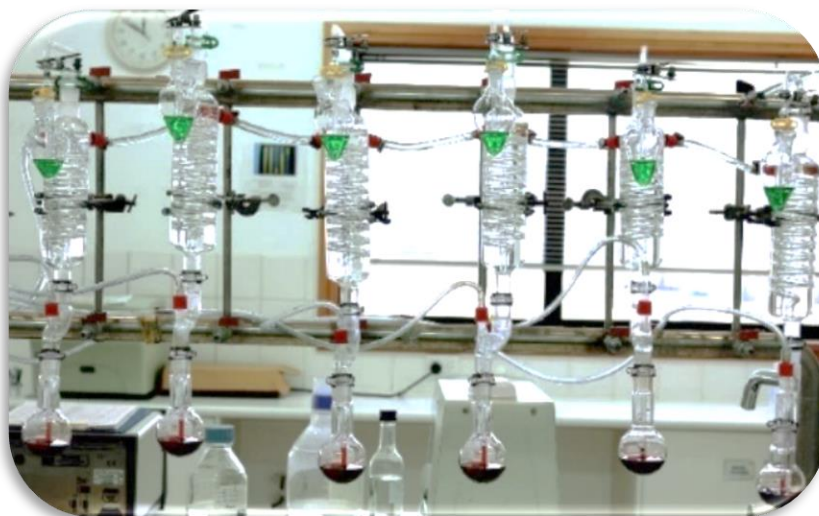


COONAWARRA JACK LABORATORY

EXTERNAL ANALYSIS



TEST	VOLUME REQUIRED (ml)	COST	
		Ex GST	Inc GST
Free & Total SO ₂	200	\$30.00	\$33.00
pH & TA	100	\$20.00	\$22.00
Specific Gravity	200/500	\$18.00	\$19.80
Alcohol	100	\$22.00	\$24.20
NTU (Turbidity)	100	\$10.00	\$11.00
Acetic acid	50	\$35.00	\$38.50
Glucose : Fructose	50	\$30.00	\$33.00
L-Malic Acid	50	\$30.00	\$33.00
YAN	100	\$35.00	\$38.50
Heat Stability	100	\$20.00	\$22.00
Cold Stability	300	\$20.00	\$22.00
Bentonite Trial	2,000	\$75.00	\$82.50
Grape Maturity (Baume, pH & TA)*	300	\$35.00	\$38.50
Energy	100	\$30.00	\$33.00
Microbiological Stability	750	\$75.00	\$82.50
Filterability	750	\$35.00	\$38.50



CJW-LAB-FRM-001 - External Wine Analysis Request Form must accompany all samples.

Payment via cash or eftpos on the day unless a credit account has been approved.

Analysis is preferred to be conducted between Tuesday – Thursday.

However, can be done on other days if required – please call the laboratory to discuss and advise.

Samples to be delivered to the front office by 11am (9am for Heat stability, 1pm for grape maturity)

*All Grape Maturity samples require notification to CJW the business day prior, N/A outside of vintage.

Your analysis bottles will be available for collection from the front office 1 week after analysis, however, should you need to collect your bottles earlier than this timeframe please advise when delivering.

15025 Riddoch Highway, PO Box 322 Coonawarra SA 5263 | Phone: (08) 8736 3130 | Email: lab@coonawarrack.com

Document #:	CJW-LAB-DOC-003 - External Analysis Info Sheet - Rev 1.5				
Completed By:	M. Ploenges	Issue date:	28/02/2024	Revision Number:	1.5
Authorised By:	M. Ploenges	Document Status:	Released	Pages:	Page 1 of 1
Document	P:\06 Laboratory\00 Documents\CJW-LAB-DOC-003 - External Analysis Info Sheet - Rev 1.5.docx				